



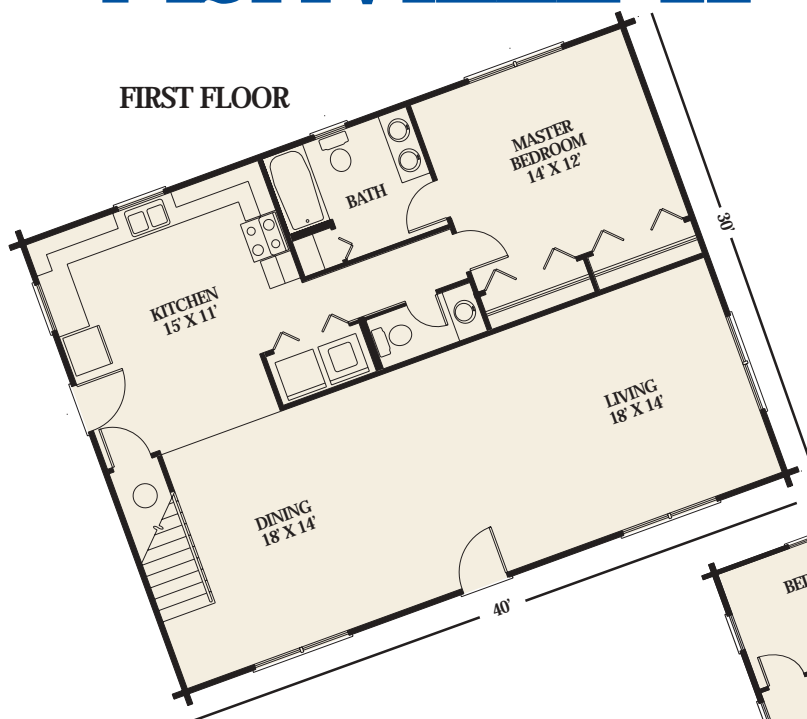
ASHVILLE II

Artist Rendering Actual Plans May Vary

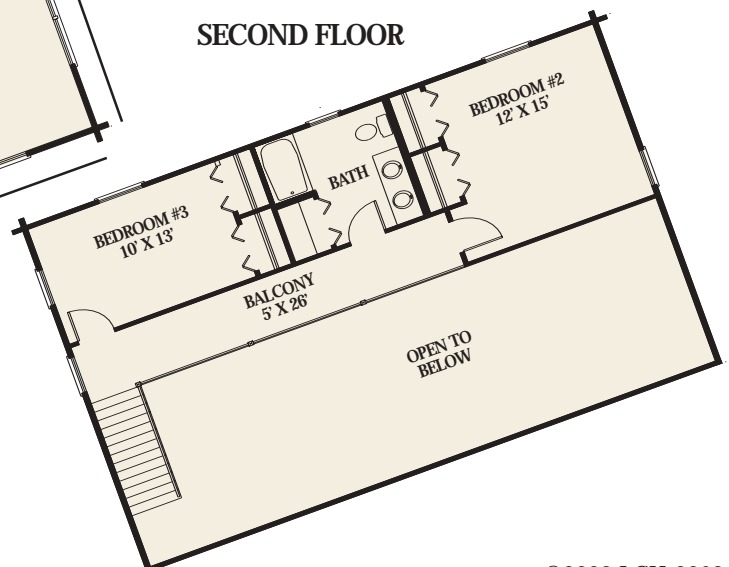
Overall Dimensions:
30' x 40' (9,144 x 12,192 mm)

Approximately
1,800 sq ft

FIRST FLOOR



SECOND FLOOR



©2002 LCH-0062

Call Toll Free **1.800.562.2246** usa

Or visit our website at www.logcabinhomes.com