

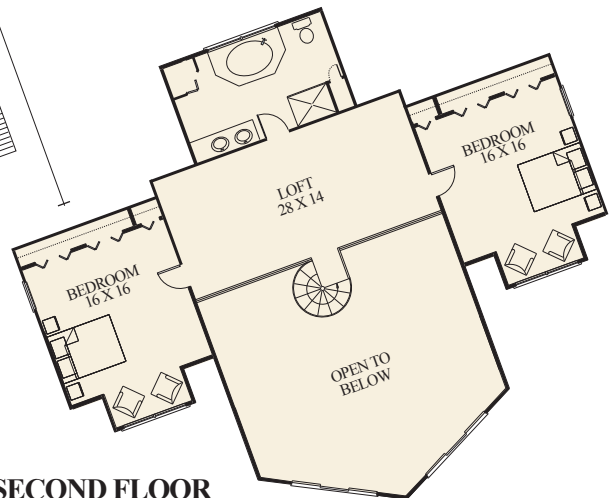
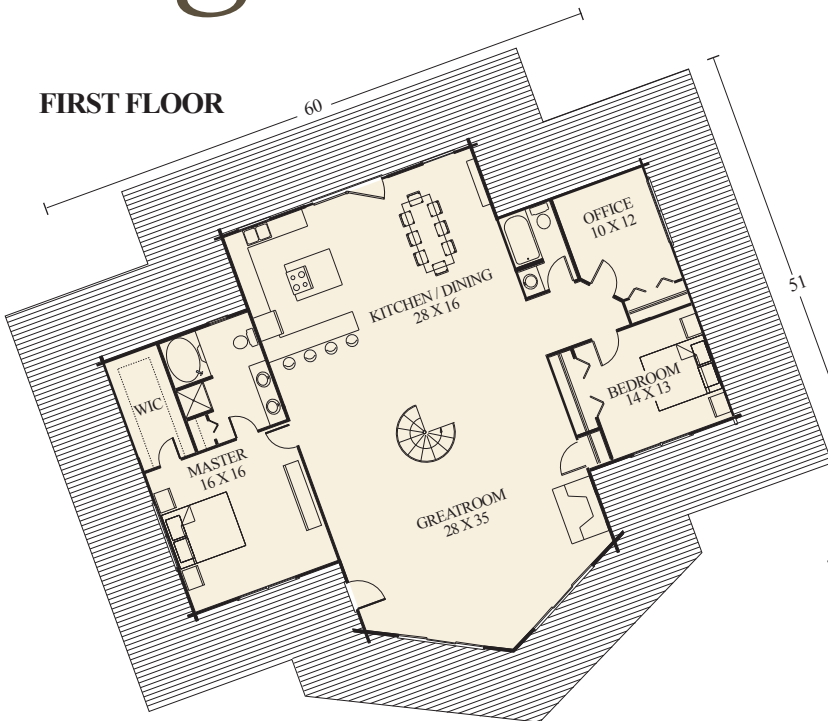


Artist Rendering Actual Plans May Vary

# High Point II

Overall Dimensions:  
60' x 51'  
Approximately  
3,456 sq ft

## FIRST FLOOR



## SECOND FLOOR



©2013 LCH-0304

Call Toll Free 1.800.562.2246 usa

Or visit our website at [www.logcabinhomes.com](http://www.logcabinhomes.com)